

1 2 3 4 5 6 7 8

REV	LOCATIONS	DESCRIPTION	DATE	REVISER	APPD

A

B

C

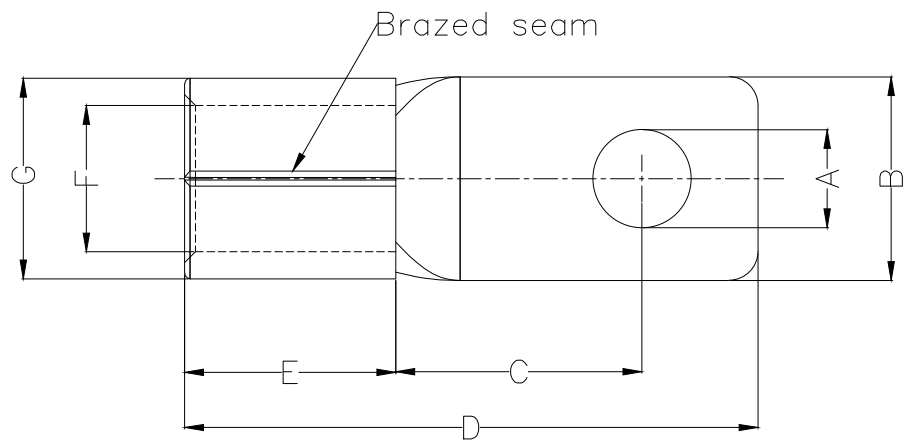
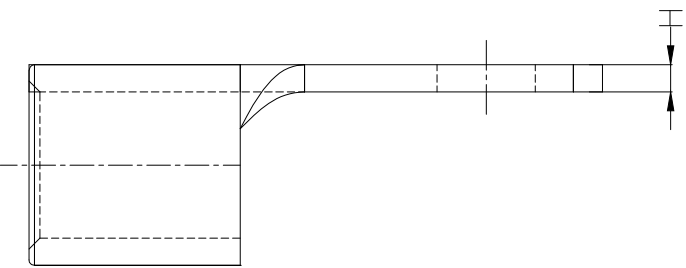
D

E

F

Notes:

Material: Copper
 Plating: Matte tin plated
 Wire range: 35mm²/ (2AWG)
 Applicable screw: 1/4" UNC
 Max current: 160A



PART NO.	Dimensions							
	A	B	C	D	E	F	G	H
FGT01-038000600B0N2	±0.3	±0.5	±1	±1	±1	±0.5	±0.5	±0.05
	6.5	13.5	16.3	38.5	14.0	9.3	13.3	1.8

<p>THIRD ANGLE PROJECTION</p>	GENERAL TOLERANCES (UNLESS SPECIFIED)		APPROVE BY	DATE	PART NO.	ITEM NO.	<p>Building Technology Cornerstone</p>
	X. ±0.30	X.* ±5'	LEO	19/JAN/21	FGT01-038000600B0N2	FGT01	
	X.X ±0.20	X.X' ±2'	CHECKED BY	DATE	TITLE		
	X.XX ±0.15	X.XX' ±1'	GISELLE	19/JAN/21	Rectangular tongue terminal		
SCALE	SIZE	X.XXX ±0.10	X.XXX' ±0.5'	DRAWN BY	DATE	REV 0	
5:1	A4			PYD	19/JAN/21	SHEET NO. 1/1	

1 2 3 4 5 6 7 8

THIS DRAWING CONTAINS INFORMATION THAT IS PROPRIETARY TO TXGA INDUSTRIAL ELECTRONICS(S.Z)CO.,LTD AND SHOULD NOT BE USED WITHOUT WRITTEN PERMISSION